

edra

THE GREATEST COMFORT, ELEGANCE AND PERFORMANCE

Grinza

Fernando e Humberto Campana

Grinza

Fernando and Humberto Campana

General description:

Low-back padded armchair, ideal for conversation. The armchair is realized with a tubular steel frame structure covered, padded and finished with a generous cover casually disposed. A special joint allows an unexpected elasticity of the armrests, offering flexibility when pushed. Available with cover in ecologic fur that makes it softer, or in leather. The manufacturing technique makes the wrinkling of the cover always different, therefore each chair is different from the other.



Technical description:

Molded steel structure.

Padding in polyurethane foam.

Floor scratch proof feet.

Flexible armrests due to rubber joint.

Not removable cover.

On request, product can be realised also according to other regulations.

GRZ010

poltrona
armchair
fateuil
Sessel



±106
41 3/4"

±75
29 1/2"



±88
34 3/4"

±42
16 1/2"

Grinza

Fernando e Humberto Campana

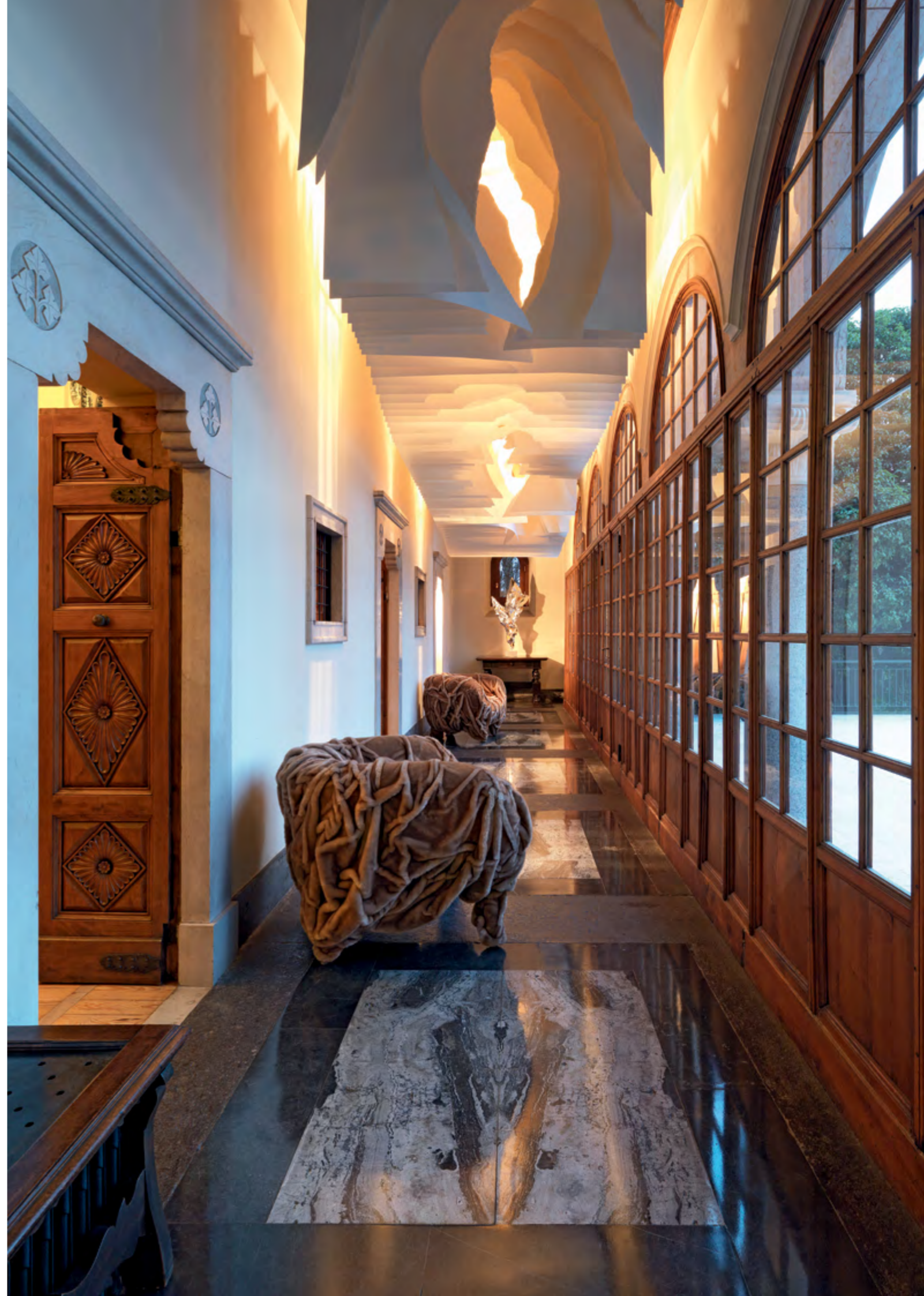


Poltrona comoda, da conversazione. Telaio d'acciaio tubolare ricoperto dall'imbottitura a cui viene applicato il rivestimento, leggermente abbondante. Due versioni, in pelle o soffice pelliccia ecologica. Braccioli flessibili grazie a un particolare tipo di giunto che offre una comoda flessione e ne aumenta la cedevolezza sotto la spinta delle braccia.

Comfortable low-back armchair. The frame is steel tubing with the padding attached and covered by slightly abundant upholstery. It is available in two versions, in soft leather or ecological fur. Flexible armrests, thanks to a particular type of coupling. This special joint offers a convenient response increasing the pliability under the thrust of the arms.

Fauteuil confortable, de conversation. Cadre en acier tubulaire recouvert par le rembourrage auquel est appliqué le revêtement, légèrement abondant. Deux versions en cuir ou fourrure douce écologique. Les accoudoirs sont flexibles grâce à un type de joint particulier qui offre une flexion pratique et augmente sa souplesse sous le poids des bras.

Bequemer Sessel mit niedriger Rückenlehne. Gepolstertes Stahlrohrgestell, auf den ein leicht übergroßer Bezug darübergelegt wird. In zwei Versionen in Leder oder weichem Kunstfell erhältlich. Flexible Armlehnen dank eines besonderen Gelenks, das eine bequeme Flexion ermöglicht und die Biegsamkeit mit zunehmendem Armdruck erhöht.



La tecnica di lavorazione e la scelta dei materiali rendono diversa ogni poltrona dall'altra. Le arricciature non sono programmabili, "accadono" in maniera naturale grazie all'esperto drappeggio manuale.

The processing technique and the choice of materials make every chair different from the other. The wrinkling of the upholstery cannot be planned. It happens in a casual way, as a result of the expert manual draping.



La technique de fabrication et le choix des matériaux rendent chaque fauteuil différent l'un de l'autre. Les plis ne peuvent pas être prévus, ils se forment de façon naturelle grâce au drapage manuel expert.

Die Produktionstechnik und die Materialwahl machen jeden Sessel zu einem Unikat. Der Faltenwurf der Bezüge ist willkürlich. Sie geschehen völlig natürlich dank der von Hand gearbeiteten Drapierung.



edra

THE GREATEST COMFORT, ELEGANCE AND PERFORMANCE

edra.com

